

An artistic illustration of a young boy and girl holding hands and walking away from the viewer on a path. They are silhouetted against a massive, glowing full moon that dominates the center of the frame. The sky is a deep purple and blue, filled with stars and wispy clouds. The path they are on is illuminated by a warm, golden light, and there are small, glowing fireflies or moths around them. The overall mood is peaceful and hopeful.

LET HOPE
SHINE THROUGH

AUCTION
CATALOGUE

himaya
حمية

ABOUT HIMAYA

Protecting Childhood, Empowering Futures

In Lebanon, child abuse often remains hidden behind closed doors. 1 in 6 children has been a victim of sexual violence, and many more face physical, emotional abuse, and neglect every day. Since 2008, himaya has been breaking the silence.

Why himaya Matters Now

As Lebanon faces funding cuts and overlapping economic, political, and social crises, children are more exposed than ever. Himaya stands at the frontline—filling the gaps, protecting children, and building stronger systems of care.

Our Reach and Recognition

himaya is officially mandated by the Ministry of Justice in key regions of Lebanon and is a proud member of the International Social Services (ISS) network. With offices in Beirut, Mount Lebanon, the North, South, and Bekaa, our multidisciplinary team and network of volunteers totaling over 300 people work all over Lebanon and offer:

- Specialized interventions for abused children and their families: 22,497 children supported
- Awareness sessions in schools and communities: reaching 288,000+ children and parents
- Safeguarding policies and procedures for nurseries, schools, and private institutions
- Training for professionals and caregivers: 8,200+ trained
- Rehabilitation of Safe Parks
- Establishment of Children's Municipal Councils

Together for Change

Your generosity tonight supports this mission. Thank you for standing with us—and with Lebanon's children.

Our mission is simple but urgent: to protect every child's right to safety, dignity, and a future free from harm.

All auction services were provided pro bono and no buyer's premium applies.

All sales are final and items are sold in their current condition, no claims allowed after the sale.

Packing, transport or shipping, insurance, customs, and export fees are the winning bidder's responsibility.

THANK YOU LETTER

Dear Friends,

On behalf of himaya's Board of Directors, leadership team, and staff, we extend our heartfelt thanks to the incredible artists, galleries, and individuals who generously donated to this year's auction.

We are especially grateful to Nada Boulos for offering her expertise and the support of her esteemed auction platform, and to Mariana Wehbe, for her unconditional support and for conducting the live auction on June 18.

Their belief in our mission and donation of their time and skill helped bring this vision to life.

This year's auction will take place in two parts:

•Part I

Online Closing with a Live Auction during the Gala Dinner:

Runs from 16 June at 11:00 AM, closing 18 June at 9:45 PM

•Part II

Online Auction: Runs from 16 June at 11:00 AM, closing 19 June at 6:00 PM

bid.nadaboulosauction.com

Every piece in this auction is more than a work of art—it's a message to every child in Lebanon: you are seen, you are valued, and you deserve a life free from violence and fear.

As Lebanon continues to face unprecedented challenges, our children are among the most affected. Abuse, neglect, and trauma are on the rise. Himaya's work has never been more critical—or more difficult. Yet, thanks to your support, we remain present in every region, standing with children and families, and fighting for a safer, more just future in all of Lebanon.

Every bid placed during this auction is not only an investment in something beautiful or rare—it is a direct contribution to protecting a child, supporting a family, and strengthening a broken system. You are not just supporting Himaya's mission—you are part of it.

Thank you for standing with us. Thank you for believing in the right of every child to grow up safe, heard, and empowered. And thank you for helping us paint a future filled with hope.

With all our gratitude,

VIVIANE & LILIA

MARIANA WEHBE

Auctioneer



**Founder and Creative Director of Mariana Wehbe Public Relations, and
Founder of We Design Beirut**

Based between Beirut and Abu Dhabi, Mariana has been a leading advocate for design, culture, and public art for over a decade. Through her PR firm, she has represented exceptional design talent and orchestrated memorable events, managing everything from concept to execution. Now in its second edition, We Design Beirut brings together over 180 designers, artisans, and students in an event that fosters networking and opportunities, enriching the regional design landscape.

NADA BOULOS

For the Auction Platform



Nada Boulos is a seasoned auctioneer and art consultant specializing in modern and contemporary art from Lebanon and the Middle East. With over 30 years in the field, she has helped shape the regional market and elevate Lebanese artists internationally.

She studied political science at the American University of Beirut and Université Paris II, later training at Sotheby's Institute of Art in London and apprenticing under the famed auctioneer Guy Loudmer at Hôtel Drouot, in Paris. In 1992, she founded one of the first auction houses in Beirut, pioneering a new phase in the local art scene.

Today, Nada Boulos Auction is recognized for its curated sales, focus on provenance, and role in promoting cultural continuity. Boulos has led major sales of regional artists and advises collectors, institutions, and artists.

Her support for cultural preservation and philanthropy includes benefit auctions for child protection and education. Known for her expertise and steady leadership, Boulos remains a key connector in the region's art world.

PART I

Online Closing with a Live Auction

During the Gala Dinner:

Runs from 16 June at 11:00 AM, closing 18 June at 9:45 PM

bid.nadaboulosauction.com

LOT 01

RAMI KADI

TRIALS OF OUR HEART



Embroidery, Swarovski crystals, French knots, raffia threads, and glass beads fix on fabric, 40 x 40 cm

Trails of Our Hearts radiates a universe where every star, every beam, and every path is infused with love. With an explosion of dazzling embroidery and glistening beads, this artwork visualizes how human connection leaves luminous traces across the cosmos — a sparkling tribute to the invisible yet eternal ties that bind us.

ABOUT THE ARTIST

Rami Kadi is a Lebanese-American designer celebrated for his bold couture that fuses intricate craftsmanship with innovation and modern femininity. Based in Beirut, his creations have dressed global icons and royalty. Appointed the UN Environment Programme's Regional Goodwill Ambassador for Sustainable Fashion in 2020, Kadi is a pioneer in conscious couture. In 2022, he launched the first couture NFT powered by AI, and in 2025, debuted his first art collection, Highway to Heaven, marking a new phase in his creative journey.

Generously donated by Rami Kadi Maison de Couture.

RAMI KADI
maison de couture

Estimate Price

2,500\$ - 3,500\$

LOT 02

ZEIN DAOUK

LIBERI: CALVATIA AUREA MAXI



Sculptural vessel
Glazed Stoneware
H: 45 cm Ø: 36 cm

"Liberi" comes as a reminder that "it takes a village to raise a child" - a community of good people to protect, support, and love them so that they may thrive. Children are our future, the holders of our collective fate.

From THE THIRD KINGDOM SERIES, Calvatia Aurea Maxi is a stoneware sculptural vessel finished in a matte mustard yellow glaze with lava-textured detailing and a soft butter-yellow gloss interior. The Calvatia is a nurturing, full-bellied being, shaped by care, devotion, and boundless giving. Its textured golden surface reveals a genuine and grounded soul, one still rooted in the earth from which it grows, and without which it could not survive. Ours is a shared breath, a mutual becoming. We must remember that no being grows alone, we are made of each other.

THE THIRD KINGDOM has been shown at The Salon NYC, Design Miami, Design Miami Paris, the Collect art fair in London, Philadelphia, Dubai and Beirut.

ABOUT THE ARTIST

Based in Beirut, Zein Daouk is a multidisciplinary architect with a passion for ceramics and an obsession for creating. Her journey into clay begins in 1999, but it is only in 2020 that it becomes her voice and she devotes herself to ceramics professionally. Her work embraces the dialogue that links disciplines and highlights the fluid narrative between functional art and sculptural design. She explores form by working with the four elements; water stretches shapes into earth, air commits them to form and fire becomes the founding act that brings them to life.

A harmonious combination of biomorphic forms emerges and pushes the sculptural vocabulary to uncover a mysterious new species of functional art objects. At the essence of her craft lies an insatiable curiosity to learn.

Generously donated by Zein Daouk Cermics.

Estimate Price

4,500\$ - 6,000\$

LOT 03

RHEA YOUNES

WAVE BENCH “SUN”

**Wood,
158 x 40 x H: 33-42 cm**



This multi-functional bench is boundless by its fluid shape. Inspired by the sun and natural water elements, it reflects the harmony and continuous flow found in nature. Its form evokes the warmth and movement of sunlight, representing the constant metamorphosis of water.

ABOUT THE ARTIST

Founder of Collective Y Rhea Younes was born into the field of bespoke furniture design and production. Her creative journey began very early on, during an apprenticeship at her family's furniture atelier in Beirut, Lebanon. As a young girl, she recalls her fascination with textures, fabrics and materials, attention to detail, and hand-made items produced in her late father's atelier, during her apprenticeship. Armed with her unbounded imagination, she began sketching and bringing to life her creations. Today, based between Paris and Beirut, Rhea draws inspiration from eras long gone, her travel and nature. With her passion for product design honed at a young age, she combines her formal education and family legacy in artisanship, to produce bespoke projects and furniture pieces.

Generously donated by the Collection Y by Rhea Younes.

COLLECTIVE Y

by Rhea Younes

Estimate Price

3,500\$ - 4,000\$

LOT 04

DIA MRAD

6AM SPLURGE, 2020



90x120 cm

6AM Splurge is part of the Silos Series, a photographic body of work documenting the Beirut Port Silos following the 2020 explosion.

The series tracks the site's condition over time and its role within overlapping political, historical, and spatial narratives.

Taken eight months after the explosion, the image reflects a moment of unresolved stillness. It contributes to a visual archive that engages with the debate around preservation and demolition, using photography to track how the site is shaped by political decisions and erasure.

ABOUT THE ARTIST

Dia Mrad is a visual artist based in Beirut. His work explores how built environments and material systems register political conditions, with a focus on transformation, neglect, and spatial control. He works primarily with photography and installation. Mrad's projects often document contested sites or disappearing structures, using image-making to trace how material presence is shaped by governance, erasure, and historical tension. His work has been exhibited at the Sharjah Architecture Triennial, Cité internationale des arts (Paris), Misk Art Institute (Riyadh), and Museum of Art of Rio.

He holds a Master of Architecture and is currently developing The World of Objects, an ongoing research framework concerned with object agency and nonhuman systems.

Generously donated by the artist.

Estimate Price

6,800\$ - 9,400\$

LOT 05

RAMY BOUTROS

RAY OF HOPE



Plated aged brass and fiberglass sheets lacquered in three shades of blue,

Big chair: 55 x 110 x H 135 cm

Small chair: 38 x 76 x H 100 cm

Floor light: 38 x 70 x H 195 cm

For himaya's auction, Ramy Boutros Architects is presenting an artistic yet functional installation inspired by origami birds: two sculptural chairs, one representing the parent and the other the child, along with a tall floor lamp. Known for his architectural and expressive design language, Ramy Boutros has used plated aged brass and fiberglass sheets lacquered in three shades of blue to evoke protection and care. The larger bird watches over the smaller one, while the lamp casts a gentle, protective light, echoing himaya's mission to raise awareness about child abuse.



ABOUT THE ARTIST

Founder & CEO, Ramy Boutros Architects

Interior Architect | Furniture Designer | Creative Visionary

Generously donated by Ramy Boutros Architects.

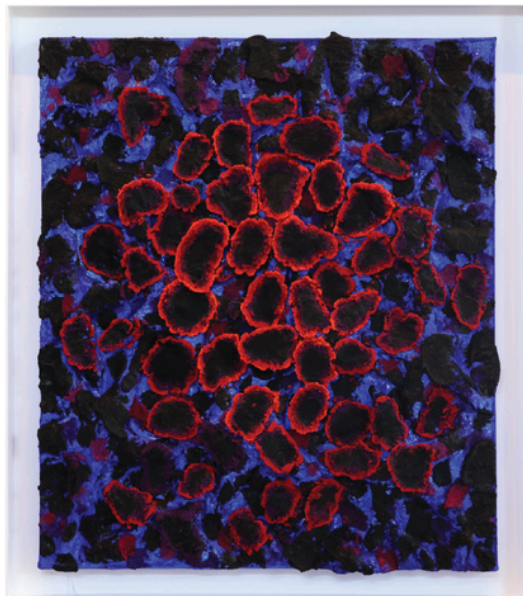


Estimate Price

18,000\$ - 22,000\$

LOT 06

NABIL NAHAS **UNTITLED**



Acrylic on canvas, 84 x 72 cm

Internationally acclaimed artist Nabil Nahas has generously created and donated a unique painting for every auction ever held by himaya.

This ongoing gesture reflects his long-standing support for the organization's mission to protect children from abuse and empower resilience across Lebanon.

This work continues that legacy:

- *Vivid fractal forms in red and blue unfold across a richly textured surface.*
- *Made with Nahas' signature mix of acrylic and pumice, the canvas appears almost sculpted, echoing organic growth and natural geometry.*
- *The painting exemplifies Nahas' exploration of repetition, pattern, and the structural logic of nature.*

ABOUT THE ARTIST

Nabil Nahas, born 1949 in Beirut, is a Lebanese-American artist known for his vibrant, three-dimensional paintings. He studied at LSU and Yale before settling in NYC in 1973. Nahas divides his time between New York and Lebanon, where he paints his iconic "trees." His work, celebrated for its vivid color and texture, was showcased in his solo exhibition "Grounded in the Sky" at Château La Coste until June 13, 2023. Nahas has represented Lebanon internationally and exhibited in prestigious galleries and museums worldwide. His recent works, like Full Spectrum (1999) and Untitled (2007), reflect his deep connection to nature and Lebanese heritage.

Nabil Nahas will represent Lebanon in the 2026 Venice Biennale.

Generously donated by the artist.

Estimate Price

75,000\$ - 100,000\$

LOT 07

NADIM KARAM

BOUQUET OF FLOWERS 1, 2024



**Powder paint coated
Stainless Steel,
H 220 x 80 x 120 cm**

Bouquet of Flowers 1 is a large-scale sculpture, part of the Urban Bouquets series - a physical manifestation of Karam's 2006 desire to offer flowers to cities and create 'pockets of dreams' in urban environments constrained by the orderliness of policies and the constant challenges of rapidly changing times. Nadim Karam offers a colourful visual poetry for the senses that can spark imagination and instil in urban dwellers a nostalgic, even primitive, need to reconnect with nature. Each work in the series combines elements of Karam's visual language, bringing bursts of liveliness and a renewed sense of inner balance to counter the realities of a disoriented world.

ABOUT THE ARTIST

Artist Nadim Karam creates narratives engaging with cities and landscapes through large-scale sculptures. Karam's art practice and cross-fertilization of disciplines within the public sphere responds to contemporary challenges, social realities, and eternal quests of identity. Starting his career in Tokyo with a series of large-scale art exhibitions and performances, Karam then went on to found his multi-disciplinary practice, Atelier Hapsitus in Beirut in 1996, which branched to Rotterdam in 2020 as Nadim Karam Studio (NKS).

During the last three decades, Karam has realized numerous major permanent and temporary site-specific public art projects around the world. Karam's paintings and sculptures have been exhibited in galleries, biennales, institutions, and museums. He has held academic positions in Japan and Lebanon, and gives lectures internationally. Four monographs on his work have been published by Booth- Clibborn Editions, London. He lives and works between Rotterdam and Beirut.

Presented in collaboration with the artist.

Estimate Price

145,000\$ - 175,000\$

LOT 08

EDOUARD SOUHAI

CREATURE IN PINK



**Acrylic and pouring medium on canvas,
220 x140 cm**

In Creature in Pink, Edouard Souhaid unleashes a swirling, intricate force of color and pattern that pulses with life. The composition unfolds like a living organism—part myth, part memory—built from dense clusters of dots, brushstrokes, and organic shapes. Layers of reds, soft pinks, fiery oranges, and cool greys merge across the canvas, suggesting both movement and transformation. Despite its rich visual intensity, the work maintains a delicate balance between chaos and control. The eye is drawn to different textures: stippled formations, cellular structures, and almost topographical layers that hint at biological or cosmic systems. Souhaid's architectural background surfaces in the piece's structural complexity, yet the emotional charge is unmistakably human and intuitive.

Rather than offer a clear narrative, Creature in Pink invites the viewer to explore, to get lost in its details, and to piece together their own meaning. It is both playful and profound—a portrait not of a creature, but of creation itself.

ABOUT THE ARTIST

Edouard Souhaid (b. 1994) is a Lebanese artist and architect based in Paris since 2015. He holds a degree from the École Spéciale d'Architecture (ESA) and a Master 2 from the École Nationale Supérieure d'Architecture de la Villette (ENSA-LV), with a focus on advanced research in the social sciences, further enriching his multidisciplinary practice.

His abstract artwork has been exhibited internationally in venues such as the Beit Beirut Museum and in cities like Ho Chi Minh City and Paris. In addition to his artistic pursuits, Souhaid co-founded MINAB in 2014 and Collective for Architecture Lebanon (CAL) in 2018, which is curating the Lebanese Pavilion at the Venice Architecture Biennale 2025.

Generously donated by CHAOS Art Gallery.



Estimate Price

18,000\$ - 24,000\$

LOT 09

JEAN-MARC NAHAS

QUI SAURA, 2024



*Mixed media on canvas,
100 x 100 cm*

ABOUT THE ARTIST

Jean-Marc Nahas (b. 1963, Beirut) is a renowned Lebanese-Canadian artist known for his dramatic expressionist works exploring war, peace, and childhood inequality. He earned his M.F.A. from École Nationale Supérieure des Beaux Arts and Penninghen in Paris, where he trained with notable artists including Pierre Alechinsky and Vladimir Veličković. Influenced by his upbringing during the Lebanese Civil War, Nahas describes his work as a “private diary,” blending poetic storytelling with rapid, rhythmic brushstrokes and simplified forms to deliver emotional intensity. His figures often appear mid-action, their expressions charged with narrative depth.

Nahas also explores the female nude and spatial movement. His work has been shown in major institutions including the British Museum and Sursock Museum. He is currently represented by **Opera Gallery**.

Generously donated by the the artist.

Estimate Price

7,900\$ - 10,000\$

LOT 10

JAMIL MOLAEB

UNTITLED, 2000



Oil on canvas, 60 x 80 cm

ABOUT THE ARTIST

Jamil Molaeb (b. 1948, Baissour) is a leading Lebanese painter, sculptor, and printmaker celebrated for his vivid portrayals of rural life and Lebanese heritage. A student of Paul Guiragossian and Aref El Rayess, Molaeb studied in Algiers, earned an MFA from Pratt Institute, and a PhD in Art Education from Ohio State University. His bold, earthy works draw on Mesopotamian, Egyptian, and Islamic iconography. Renowned for his woodcuts and symbolic totemic forms, Molaeb has exhibited internationally since the 1960s. In 2015, he opened the Jamil Molaeb Museum in Baissour, Lebanon.

Generously donated by the Saleh Barakat gallery.



Estimate Price

5,000\$ - 8,000\$

LOT 11

ATELIER L'INCONNU, FADI YACHOUI PETRA



L 140 x W 75 x H 34/38 cm

Rich veined onyx with crafted polished stainless steel

Like its namesake carved into ancient rose colored cliffs, Petra is a marvel of hidden beauty and timeless design. Sculpted from rich, veined onyx, this organic low table is more than a piece of furniture; it is a ritual, a reveal, a secret waiting to be discovered.

At first glance, Petra is a statement of elemental luxury, its smooth mineral curves glowing softly in ambient light. But with a gentle rotation, it unveils its true nature; a hidden champagne bucket emerges from its depths, cradled in cool stone, ready to chill your finest vintage.

Spin further, and another tier reveals a removable tray, perfect for serving. Beneath it, a concealed box awaits; one that unlocks only with a key. This final compartment carved in wood is designed to protect what is most rare, most indulgent: your finest cigars, or simply what you treasure most.

Petra is a celebration of contrast; raw and refined, ancient and modern, functional and fantastical. It is not merely a table. It is a monument to mystery, a centerpiece for those who appreciate craftsmanship, ritual, and the pleasure of concealment.



ABOUT THE ARTIST

Fadi Yachoui is a Lebanese architect and industrial designer whose multidisciplinary practice bridges architecture, interior, and product design. Based between Milan and Beirut, Yachoui's projects span Lebanon, Italy, Africa, and the broader MENA region. His work is distinguished by a deep sensitivity to materiality, detail, and site specificity creating immersive spaces that blur the boundaries between the built and natural environments.

Shaped by experiences in Beirut, Paris, and Milan, Yachoui blends cultural heritage with a contemporary global outlook. Nature is a recurring muse, particularly in site-specific projects where vernacular forms are reinterpreted through a modern lens. His approach remains rooted in craftsmanship, context, and human-centered design.

This piece also honors the generous material contribution of **Rania Malli**, founder of Stones by Rania Malli, who provided the natural stone used in its creation. She leads one of the Middle East's premier marble companies, building on her family's legacy in the marble industry since 1975. With roots in Carrara, Italy, and experience across more than 500 projects globally, her expertise continues to shape exceptional work across the region.

Generously donated by the artist and Stones by Rania Malli.

L'1
CO
NU



Estimate Price

40,000\$ - 50,000\$

LOT 12

STUDIO MANDA BY GEORGES MOHASSEB RAOUCHE TABLE



Resin, 175 x 65 x 38 cm

Formed by the passing of time and surrounded by natural landscapes, the Raouche Rock (la grotte des pigeons) stands as Lebanon's most iconic seafront landmark. Its timeless allure inspired Georges Mohasseb to reimagine it in fluid form. The Raouche series is handcrafted by talented resin artisans who, with unyielding mastery, give the tables their organic shape, ethereal feel, and awe-inspiring colored hues.

ABOUT THE ARTIST

Georges Mohasseb is a Lebanese designer and founder of Studio Manda, known for creating non-conformist functional art that bridges nature, materiality, and craftsmanship. His work often centers on wood, celebrated for its organic texture and emotional resonance. Holding a Master's in Architecture and Design from the Catholic University of America, Georges further honed his craft at École Boulle in Paris before establishing practices in both Paris and Beirut. His bespoke pieces have been exhibited internationally at venues such as PAD Paris and London, Salon NYC, Nomad Venice, and Collect at House of Fly, reflecting a deeply rooted design philosophy that merges artistry with elemental force.

Generously donated by the Studio Manda.

STUDIO MANDA

Estimate Price

16,000\$ - 20,000\$

LOT 13

DIANA GHANDOUR

STRATA SIDE TABLES



**Natural pebble travertine ,
Small: 46 x 30 x 47 cm
(8kg)
Big: 62 x 39 x 42 cm (18kg)**

Strata Side Tables by Diana Ghandour Studio

These sculptural side tables are crafted from natural pebble travertine and defined by their fluid, organic forms. The tabletops feature soft, irregular edges that echo the erosion patterns found in nature, while the bases take on a subtly elongated oval shape—carefully considered to evoke a sense of grounding and grace.

ABOUT THE ARTIST

Diana Ghandour, a Lebanese interior architect, is dedicated to infusing spaces with positivity. With a background in psychology of colors and human behavior, she excels at creating homes that nurture well-being. Her concept house in Gemmayzeh stands as a testament to her exceptional design sensibilities, blending outstanding elements, materials, and colors. As a furniture consultant, she expertly crafts layouts and designs within budget constraints, seamlessly merging modern and vintage styles with a minimalistic aesthetic.

Ghandour's innovative approach positively impacts the well-being of individuals through her contemporary and unique designs.

Generously donated by the Diana Ghandour Studio.

DIANA GHANDOUR
LE STUDIO / L'APPARTEMENT

Estimate Price

3,800\$ - 4,000\$

LOT 14

MODEL 2023

RENAULT MEGANE SEDAN



ABOUT THE CAR

Emotion in Motion.

All-new Megane Sedan is immediately recognisable as the latest creation of the Renault design philosophy 'Emotion in Motion'. The bold front grille, signature LED 'C' shape running lights and wide front track give it a distinctive muscular stance. All-new Megane Sedan's seamless profile, with its accentuated shoulders and subtly flared wheel arches, is a perfect example of how clean, uncluttered design delivers beautiful simplicity. From the rear, the elongated horizontal tail lights accentuate the surprising breadth of the car.

Generously donated by Mrs. Daniele de Picciotto.

Estimate Price

15,000\$ - 24,975\$

PART II

Online Auction

Runs from 16 June at 11:00 AM, closing 19 June at 6:00 PM

bid.nadaboulosauction.com

LOT 01

HALA MATTA

SERIES "ORNEMENTA SACRA"



Bronze Vase, 35 x 25 x 14 cm

In a practice that continuously explores matter and involves both precise alchemy and free creation, Hala Matta, with her new collection "ornamenta sacra," invokes the preciousness of everyday objects. Briefly departing from clay, she adorns chalices, tumblers, and patens with bronze, creating a collection of liturgical objects that powerfully and gracefully invest secular interiors. The perfect proportions, precious bronze, and uniquely crafted patina of each piece also pay tribute to the artisans who accompany her in her quest for a material that is in constant mutation.

ABOUT THE ARTIST

Hala Matta (b. 1970, Lebanon) is a Lebanese ceramist who transitioned from a 20-year career in banking and luxury retail—including key roles at Louis Vuitton in Paris, Dubai, and Beirut—to pursue her passion for ceramics. She trained with master ceramists in Lebanon, Greece, Denmark, and Egypt, mastering techniques such as Raku, wheel throwing, hand building, and slab work. In 2015, she opened her studio in Beirut, followed by a Paris studio in 2021. Matta's work evolved from utilitarian forms to sculptural expressions, including glazed totems, masks, and graphic wall panels. Her use of Raku reflects a bold, timeless artistry that transcends function.

Generously donated by the artist.

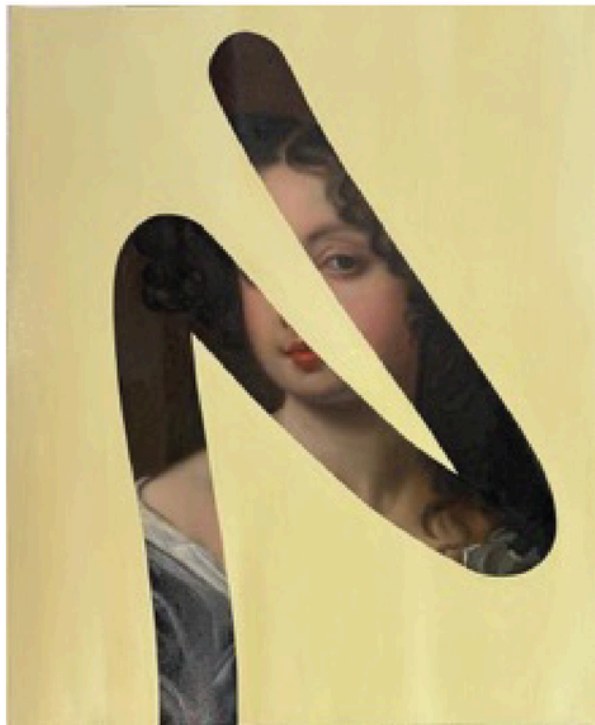
Estimate Price

1,800\$ - 2,000\$

LOT 02

LINO LAGO

FAKE ABSTRACT, 2025



Oil on linen, 120 x 95 cm

ABOUT THE ARTIST

Lino Lago is a painter who challenges the notion of painting's "death" in contemporary art. His "Fake Abstract" series juxtaposes minimalist monochromes with fragments of classical masterpieces, revealed through playful "finger trace" effects. This humorous and thought-provoking approach questions the definition of beauty and invites multiple interpretations of his fragmented portraits.

Generously donated by the Belvedere Gallery.



Estimate Price

5,000\$ - 7,000\$

LOT 03

SAMER AL AMEEN & RANIA MALLI MARBLE ROCKS!



**Wood and marble,
205 x 95 x 66 cm**

Where craftsmanship meets coastal luxury. Marble Rocks! is a sculptural, ergonomic rocking lounger built on a finely crafted wooden structure, elegantly layered with green Cipollino Ondulato—a rare, flowing-veined Italian marble, extracted from the heart of the Apuan Alps. Designed for modern lounging, its fluid form and natural textures echo the rhythm of the sea, while offering the timeless strength and beauty of stone.

ABOUT THE ARTIST

Samer Alameen (b. 1971, Beirut) is a designer and storyteller whose work blends tradition, memory, and refined wit. With a background in advertising and branding, he transitioned to design in 2012 with his acclaimed Walking Objects collection. A graduate of the Scuola Politecnica di Design in Milan, Alameen's work spans handmade and industrially produced pieces. His collections—such as The Forgotten Patterns of the Alhambra Palace and Pattern Interrupted—have been showcased at Salone del Mobile and other international exhibitions, reflecting a deep dialogue between history and contemporary design.

This piece also honors the generous material contribution of Rania Malli, founder of Stones by Rania Malli, who provided the natural stone used in its creation. She leads one of the Middle East's premier marble companies, building on her family's legacy in the marble industry since 1975. With roots in Carrara, Italy, and experience across more than 500 projects globally, her expertise continues to shape exceptional work across the region.

Generously donated by Samer Al Ameen & Stones by Rania Malli.



STONES
BY RANIA MALLI

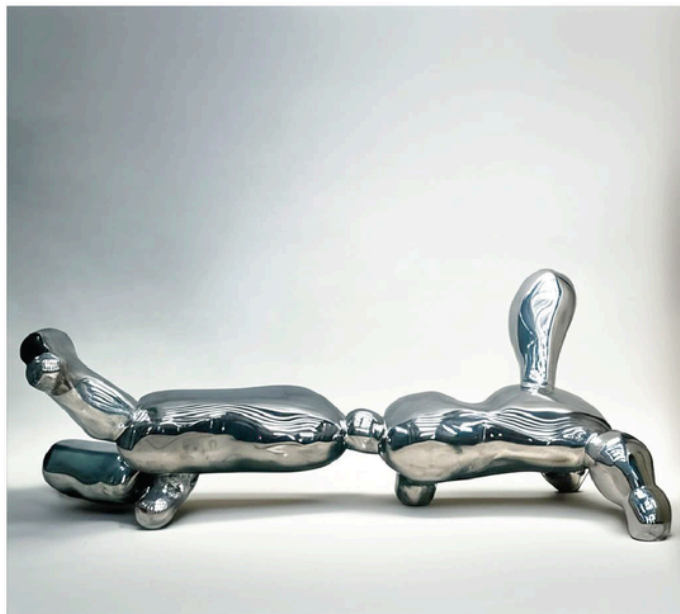
Estimate Price

4,000\$ - 6,000\$

LOT 04

PIERRE GHATTAS

BANC « EXPANSION »



**Fonte d'aluminium
Pièce unique, signée.
80 x 210 x 75 cm.**

Created exclusively for Himaya, Banc "Expansion" is a sculptural bench in cast aluminum by Pierre Ghattas. Organic and fluid in form, it captures a sense of growth and transformation—mirroring the mission of Himaya to create safe, expanding spaces for healing. As functional as it is expressive, the bench blurs boundaries between utility and art, serving as both furniture and symbol.

This one-of-a-kind piece is signed by the artist and stands as a physical metaphor for support, resilience, and human connection.

ABOUT THE ARTIST

Dr. Pierre Ghattas was born in Zahle in 1962. He specialized in the restoration of paintings and art objects at the "Accademia delle Pietre Dure" in Florence in 1985. He earned his doctorate and worked as a researcher at the CNRS in art history and archaeology under the supervision of Albert Châtelet and Jean-Claude Margueron. Since his return to Lebanon in 1998, he has served as a professor of archaeology at the Lebanese University. Additionally, he owns a painting restoration workshop and an art gallery featuring furniture by international artists and designers.

Generously donated by the artist.

Estimate Price

18,000\$ - 20,000\$

LOT 05

ARAM JUGHIAN
UNTITLED



Acrylic on Canvas
100x70 cm

ABOUT THE ARTIST

Aram Jughian was born in Lebanon in 1959.

He is a self-taught Lebanese-Armenian poet and artist. His vibrant, abstract mixed-media pieces captivate spectators with a world of light and gesture, revealing an innate understanding of form, movement, and emotion. Since 1975, he has taken part in a number of solo and group exhibitions at places including the M'ars Centre for Contemporary Art in Moscow, the Russian Cultural Centre, the Kulturzentrum, and the Sursock Museum in Russia and Lebanon. Exhibitions by Jughian were held at Galerie Janine Rubeiz in 1996, 1997, 2002, and 2005. The Ministry of Public Works in Lebanon commissioned a 14-meter-long piece of art from him, and in 1993 he was awarded the Sursock Prize.

Generously donated by The Gallerist.



Estimate Price

1,500\$ - 2,000\$

LOT 06

MARYLYNN MASSOUD AND RASHA NAWAM
VASE



*Painted and glazed
ceramic, 36 x 45 x 31 cm*

ABOUT THE ARTIST

Marylynn Massoud & Rasha Nawam are a Lebanese ceramist duo known for their instinctive, experimental approach that blends diverse materials into striking ceramic forms. Collaborating since 2007, they've exhibited in New York, Paris, Milan, Basel, Miami, Dubai, and Beirut. Massoud trained at the Manufacture de Sèvres in France, while Nawam studied ceramics in Lebanon and the U.S. Their bold use of color, texture, and shape gives each piece a distinctive presence and tactile appeal.

Generously donated by the artists.

Estimate Price

1,500\$ - 2,000\$

LOT 07

LOUMA RABAH

DAY DREAM, 2023



Oil on canvas, 100 x 160 cm

This painting invites viewers into a serene world of soft, light colors that evokes a sense of tranquility and bliss, you feel you are floating on a fluffy cloud. a feeling of weightlessness, calm and optimism. symbolizing positive thoughts and uplifting emotions in a peaceful daydream. It's a visual escape to a place of comfort and light.

ABOUT THE ARTIST

Louma Rabah's artistic journey is a testament to her passion for capturing the beauty of nature through her vibrant landscapes and still life compositions. Graduating from the Lebanese American University in 2004 with a degree in Fine Arts and Graphic Design, she has developed a unique style characterized by a bold use of color and dynamic brush strokes that bring her subjects to life. Her work not only reflects her technical skill but also a deep appreciation for the natural world, inviting viewers to experience the richness and vitality of her artistic vision.

Each piece serves as a celebration of the environment, showcasing her ability to evoke emotion and connection through her art.

Generously donated by the artist.

Estimate Price

5,000\$ - 8,000\$

LOT 08

FATIMA AL HOUSSEINI

LET IT BLOOM, 2024



*Mixed media on canvas,
120 x 120 cm*

ABOUT THE ARTIST

Fatima Al Housseini (b. 1993) is a Lebanese artist who holds a Master's degree in Fine Arts from the Lebanese University. Her notable achievements include securing third place in the 2002 Fabriano Art Competition and first prize in 2008. She currently is an art teacher. Housseini's unique artistic expression fuses Graffiti and Neo-expressionism, capturing the dynamic facets of life through a diverse palette of acrylics, oils, inks, charcoal, and pencil.

Her relocation from Beirut to Bekaa has influenced her artworks. Housseini seamlessly blends urban and natural motifs, infusing the city's architecture with the tranquility of landscapes. She participated in numerous collective exhibitions in Lebanon.

Generously donated by the Art Scene Gallery and the artist.



Estimate Price

2,000\$ - 3,000\$

LOT 09

DORI MOUZANNAR

CEDAR PENDANT NECKLACE



Rich yellow gold and pavé-set with vivid green emeralds

A tribute to Lebanon's emblematic cedar tree, this pendant by Dori Mouzannar is crafted in yellow gold and pavé-set with vivid green emeralds, capturing national symbolism. Suspended from a solid gold chain, the design blends artisanal craftsmanship with deep cultural resonance.

ABOUT THE ARTIST

"Jewelry should be timeless." Dori Mouzannar approaches each creation as a wearable sculpture—designed to be cherished for generations.

Continuing his family's six generations of jewelers dating back to the 1850s, Dori's bold aesthetic designs combine themes of tradition and sensuality, creating pieces that are both timeless and daringly modern.

Among his achievements is the 2016 Victoria's Secret Bright Night Fantasy Bra, crafted in 18k gold and adorned with 900 diamonds and emeralds.

Each unique piece Dori creates bears his signature ruby—a family heirloom that symbolizes the legacy of heritage and love.

Generously donated by Dori Mouzannar.

Estimate Price

2,500\$ - 3,500\$

LOT 10

RUJI ROGER AZAR

MICHAELÍS FEATHER



Carrara Bianco with basalt base, 134 x 25.5 x 10.5 cm

In Michael's Feather, RUJI (Roger Azar) transforms marble, a material known for its weight and permanence, into a poetic expression of lightness and upward motion. The sculpture rises in a graceful spiral, its layers unfolding like a feather caught mid-flight, or a spiritual flame ascending toward the sky.

Carved with remarkable precision and sensitivity, the piece blurs the line between nature and abstraction. The twisting form suggests growth, transformation, and the invisible forces: air, spirit, and time, that move us. The contrast between the delicate, organic shapes and the solidity of the stone base grounds the sculpture, creating a dialogue between heaviness and lift, stillness and motion.

Michael's Feather captures a moment of transcendence, inviting viewers to slow down, look upward, and feel the quiet strength of balance and grace.

ABOUT THE ARTIST

Step into the world of Ruji, a pluridisciplinary artist whose creative journey spans acting, directing, singing, dancing, and sculpting. Known for seamlessly blending mediums, Roger crafts innovative and deeply emotive works that captivate audiences and spark meaningful conversations.

A Versatile Creative Force

Beyond sculpting, Ruji shines as a performer and storyteller. Whether on stage, behind the camera, or in motion, their multidisciplinary talents breathe life into their work, exploring identity, connection, and the beauty of transformation.

An Ongoing Journey

Roger is committed to pushing artistic boundaries and inspiring others to see the world through a creative lens. With each new project, they continue to redefine what it means to be an artist, inviting everyone to experience the transformative power of creativity firsthand.

Generously donated by CHAOS Art Gallery.



Estimate Price

6,000\$ - 10,000\$

LOT 11

MICHEL ZOGHZOGHI
UNLEASHED, 2025



*Print on Hahnemuhle paper
260g Glossy white,
100 x 150 cm, 2/7
Location: Ranthambore,
India*

ABOUT THE ARTIST

Michel Zoghzoghi discovered a passion for photography 20 years ago: he bought a camera to take to a polo tournament organized by a friend in London and has never been able to put it down since.

Michel's photographic focus is on the "endangered". From the tigers of India to the polar bears of the Arctic, from the mesmerizing landscapes of Africa to the great white sharks of the Southern Oceans, he has traveled the world in search of the vanishing beauty our planet still has to offer. Through his photography, Michel wants to show how truly beautiful our planet is but he also wants to alert people to the fact that it is endangered with many species on the brink of extinction.

Generously donated by the artist.

Estimate Price

3,000\$ - 6,000\$

LOT 12

HUSSEIN MADI

UNTITLED, 2003



*Lithograph, 105 x 75 cm,
7/40*

ABOUT THE ARTIST

Hussein Madi (b. 1938, Chebaa) is a renowned Lebanese painter, sculptor, and printmaker celebrated for his vibrant, abstract works rooted in Islamic art and nature. After studying at the Lebanese Academy of Fine Arts, he moved to Rome in 1963, where he spent over two decades mastering diverse techniques from fresco to bronze. Madi's art reflects a spiritual distillation of form, with recurring abstract motifs that evoke birds, scripts, and symbols. Through rhythmic repetition and bold color, he builds a visual language that seeks unity within multiplicity — a tribute to both Sufi philosophy and the essence of creation.

Generously donated by the Hussein Madi Foundation.



Estimate Price

2,000\$ - 3,000\$

himaya
حمية

    @himayaleb
www.himaya.org